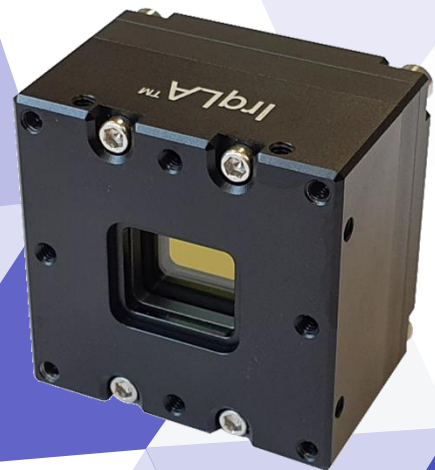


FULL TEC-LESS SWIR VGA CAMERA CORE

SWaP capable up to 30 000 Hz with ROI



IrqLA640™ / 640E™ / 640P™

This very compact core features full TEC-less implementation of InGaAs shortwave infrared detector. It is a generic product available in various interfaces, ensuring easy SWaP between SWIR and LWIR camera ranges of Device-ALab, de facto limiting risks and time of development.

Typical market segments will be in surveillance, defense, but also multispectral systems for commercial applications such as machine vision on-line and off-line inspection.

Key Features:

- SWAP
- VGA 15µm pixel pitch

- C-mount lens
- also available without lens



- frame rate up to 178 Hz
- 30 x 30 mm
- < 1 W



EU based supplier

Key performances

Sensor	Indium Gallium Arsenide PIN – Photodiode
Resolution / Pixel pitch	640 x 512 pixels / 15 µm
Spectral range	0.9 - 1.7 µm
Frame rate	Up to 178 Hz (full frame) / 30 000 Hz (ROI)
Read out Floor Noise [@295K, minimum Gain]	< 30 e-
Power consumption	< 1 W

Functions & Interfaces

Image processing	Bad Pixel Correction, NUC
For module (host-based processing)	USB3.0 RAW16
For engine core (embedded processing)	SDI, Camera Link, CMOS parallel 16 Bit, MIPI
For platform (handheld device)	Digital (DF40) or Analog version (PAL/NTSC)
Footprint	30 x 30 x 35 mm ³
Weight	< 50 g
Optics	C-mount

Others

Operating temperature range	-20°C to +60°C (Standard grade) -40°C to +70°C (Extended or Military grade)
Qualifications	MIL-STD-810G and MIL-STD-883 (TWS)

Contact us at
Infrared@device-alab.com
www.device-alab.com

